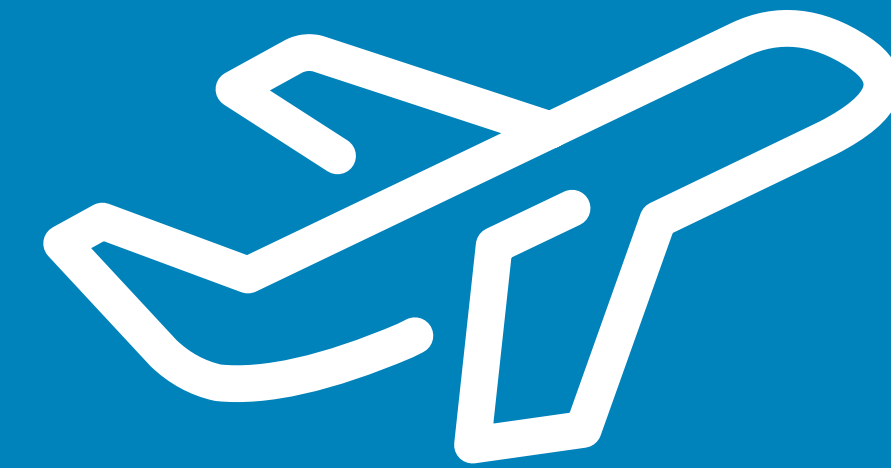


# TRAVEL RECOMMENDATIONS



Your trip with us begins on land.

**We have redoubled our care** at all our passengers' waypoints to protect your health.

Join us on this itinerary and learn a little more about what your travel experience will be like.



1

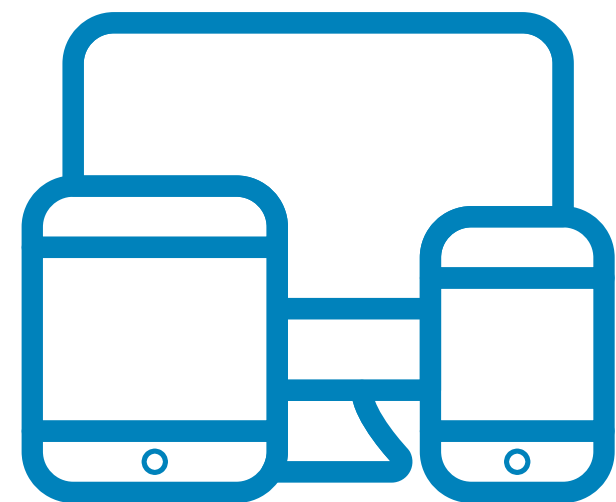
# BEFORE LEAVING HOME



The use of a face mask **is mandatory** during the entire trip.

Check the exceptions [here](#)

**Make sure you have enough masks (social or disposable),** for you and your travel companions. It is recommended to **replace the surgical/disposable masks every 4 hours.**



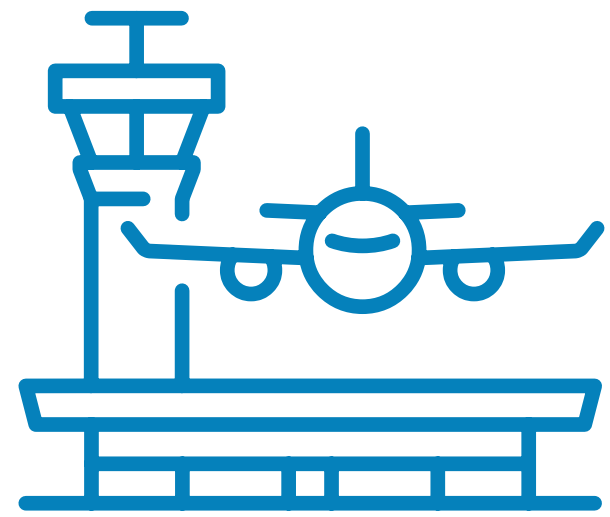
We advise you to check-in online at our website and download your digital boarding pass.

BEFORE  
LEAVING HOME



2

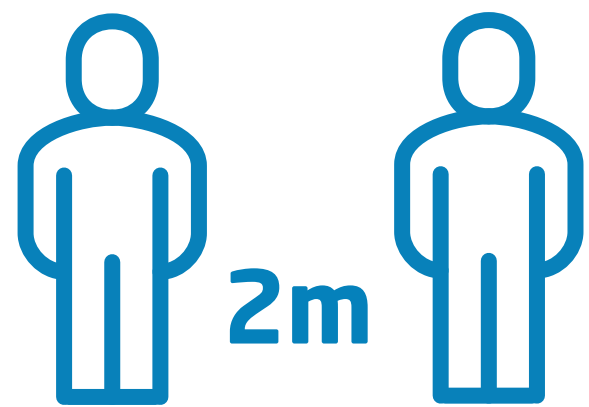
## ARRIVAL AT THE AIRPORT



Your itinerary at the airport has been reassessed. You may encounter delays at some points, so you should **present yourself at the airport at the indicated times.**



When you arrive at the airport, **put on your mask!** You will find our employees protected with masks and gloves.



Keep the **recommended social distance** and respect the displayed signs.



**Sanitize your hands whenever necessary** by using the hand disinfectant available at several airport venues.

ARRIVAL AT  
THE AIRPORT

3

## CHECK-IN



Acrylic protections have been placed to reduce the risks of proximity.



Your documents must be **presented and handled by you.**

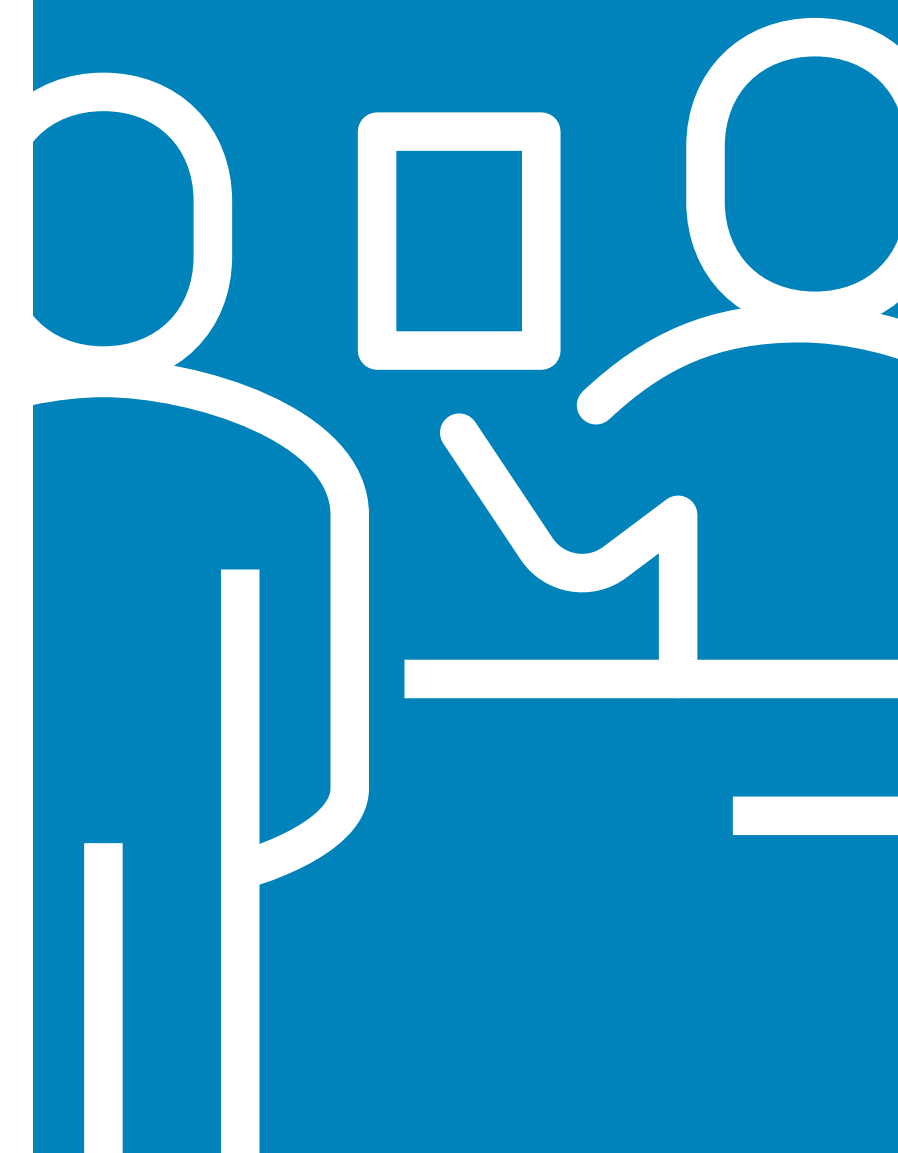


To reduce movements and contacts in the cabin, **you should limit your cabin baggage to the essentials, and to volumes that can be handled only by you.** When the cabin volume limit is reached, your carry-on baggage may have to be carried in the aircraft's hold.



You will have to **remove your mask momentarily** during the necessary identification processes **when requested.**

CHECK-IN



4

## SECURITY CHECK



Follow closely the indications posted and issued by the security officers.



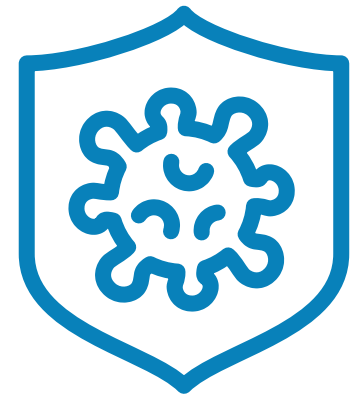
**Additional care has been taken in the hygiene of the boxes** used to deposit your belongings, during the security check.

SECURITY  
CHECK



5

# BOARDING / DEBOARDING



All common areas will be **cleaned with regularity**.



Keep the **safety distance** during boarding and deboarding.



**Attend the boarding gate in advance** and follow the instructions. Passengers traveling without cabin baggage have priority when boarding.



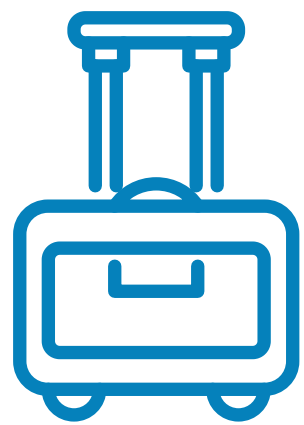
The use of a face mask **is mandatory** for access and stay on airplanes.  
In case of non-compliance, your boarding **will be denied**.

BOARDING /  
LANDING



6

## ABOARD THE PLANE



We limited the authorized volumes in the cabin, to reduce movement and contacts.



The meal service will be limited and adjusted to the duration of your trip. We give preference to **sealed and packaged products**, guaranteed by a **certified company**.



Our crew is qualified to take all **necessary measures** in the event of a symptomatic case being detected on board.

ABOARD  
THE PLANE





Check all the procedures adopted to  
strengthen the sanitization of our aircraft at:

[www.azoresairlines.pt](http://www.azoresairlines.pt)